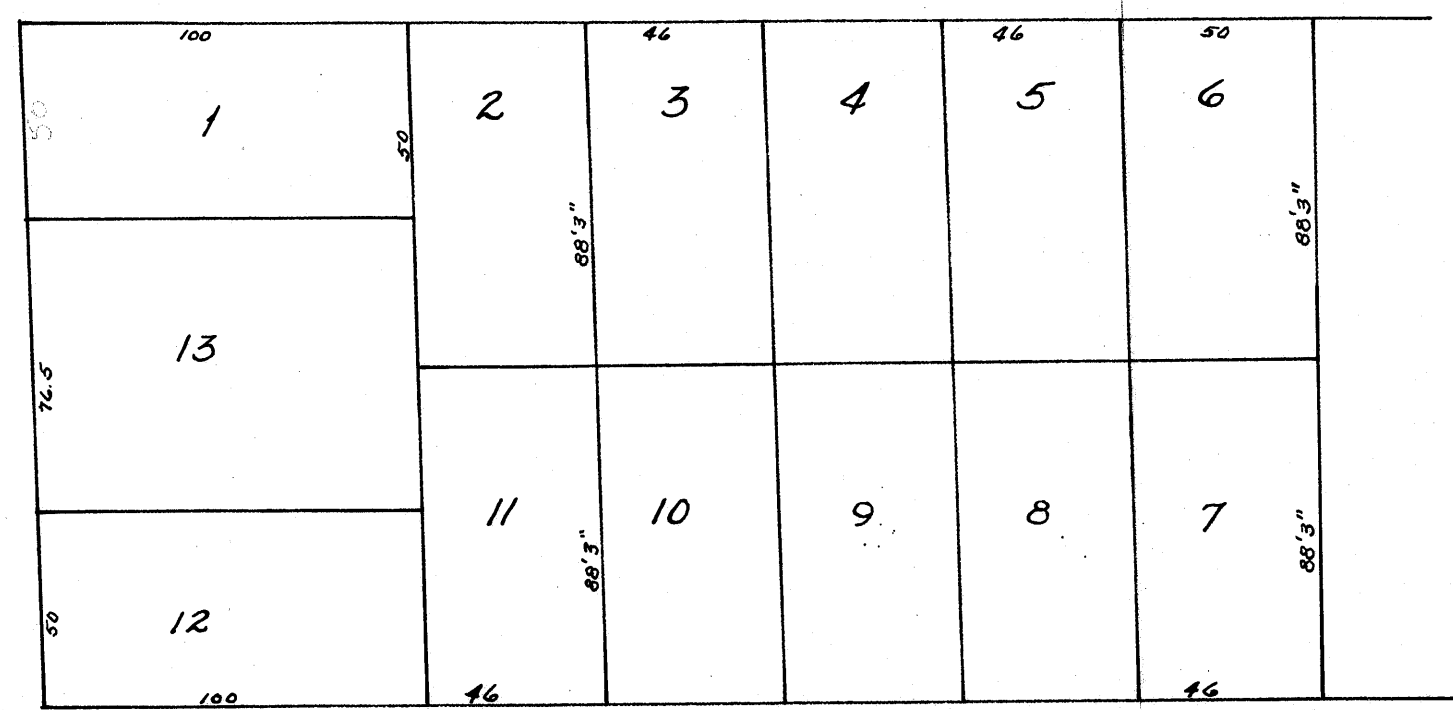


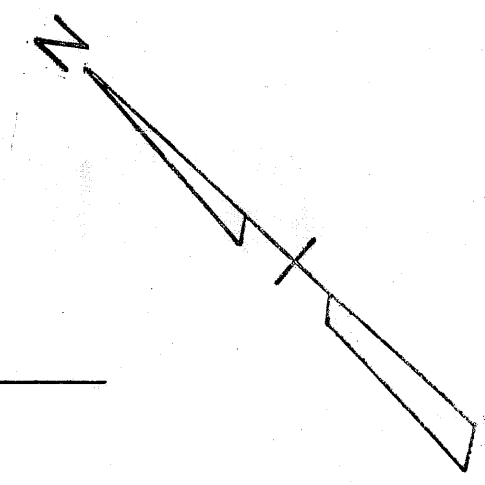
on business and 7/6/38

E. FIFTEENTH STREET

BLOSSOM STREET



BRUCE STREET



NALL'S RE-SUBDIVISION
 OF PART OF BLOCK No 12
 BRYAN'S FIRST ADDITION
 Scale: 1" = 50'
 DR. 97 pp. 512
 DEC. 1, 1938

249